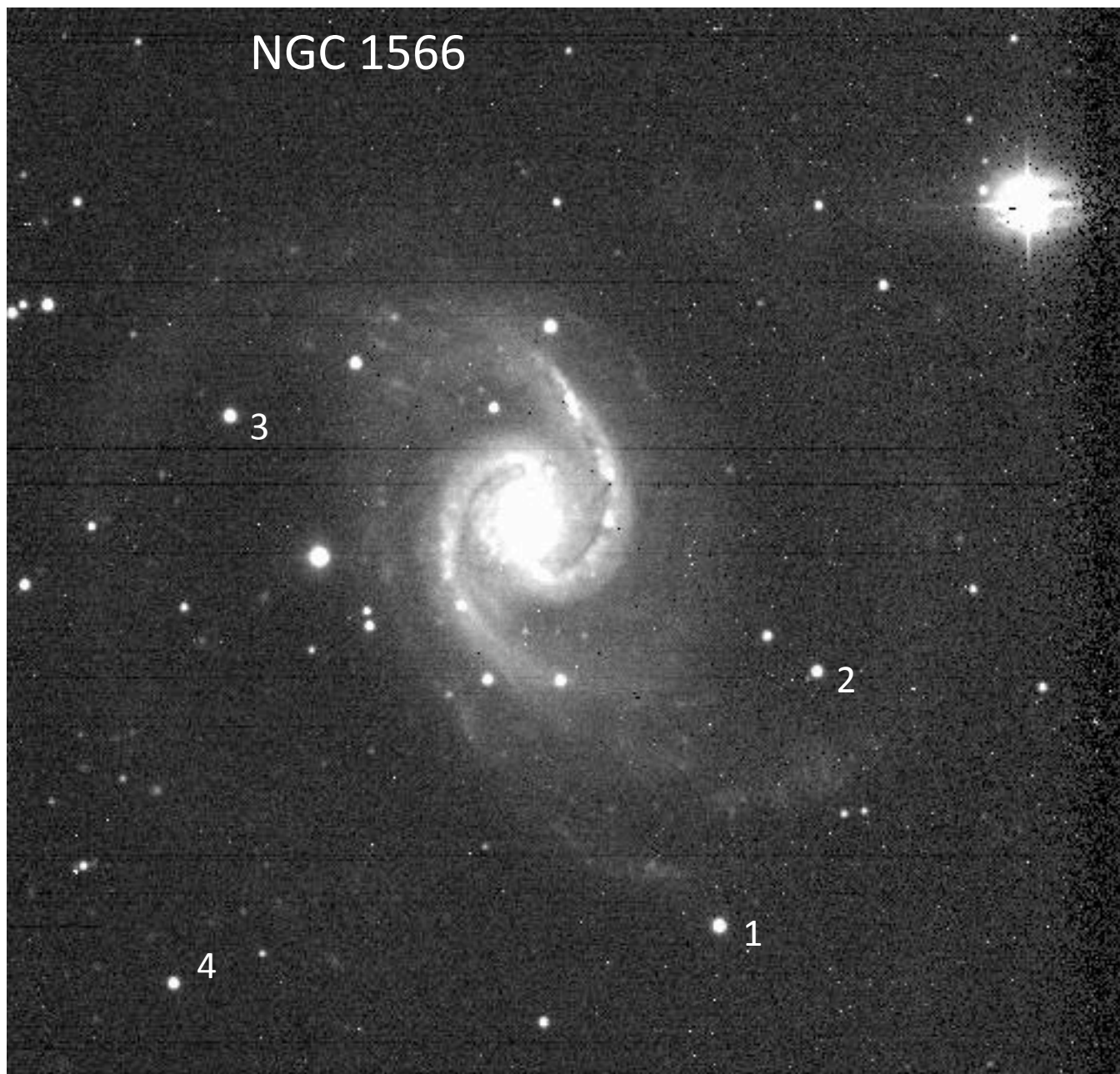
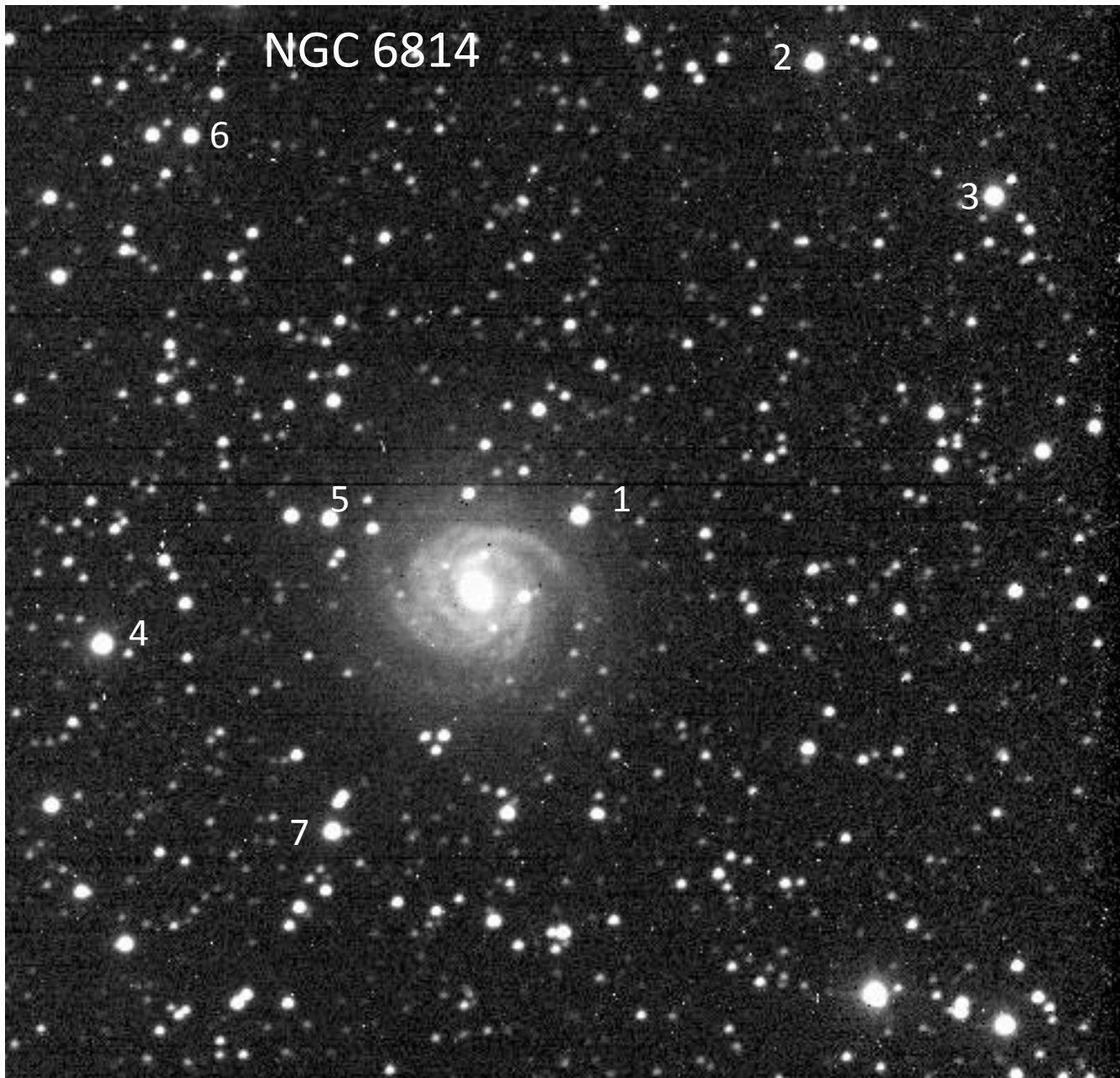


NGC 1566



Star	B	V
1	14.37	13.77
2	15.53	14.75
3	14.72	14.08
4	15.39	14.89

Base image SARA-S V 10x10'

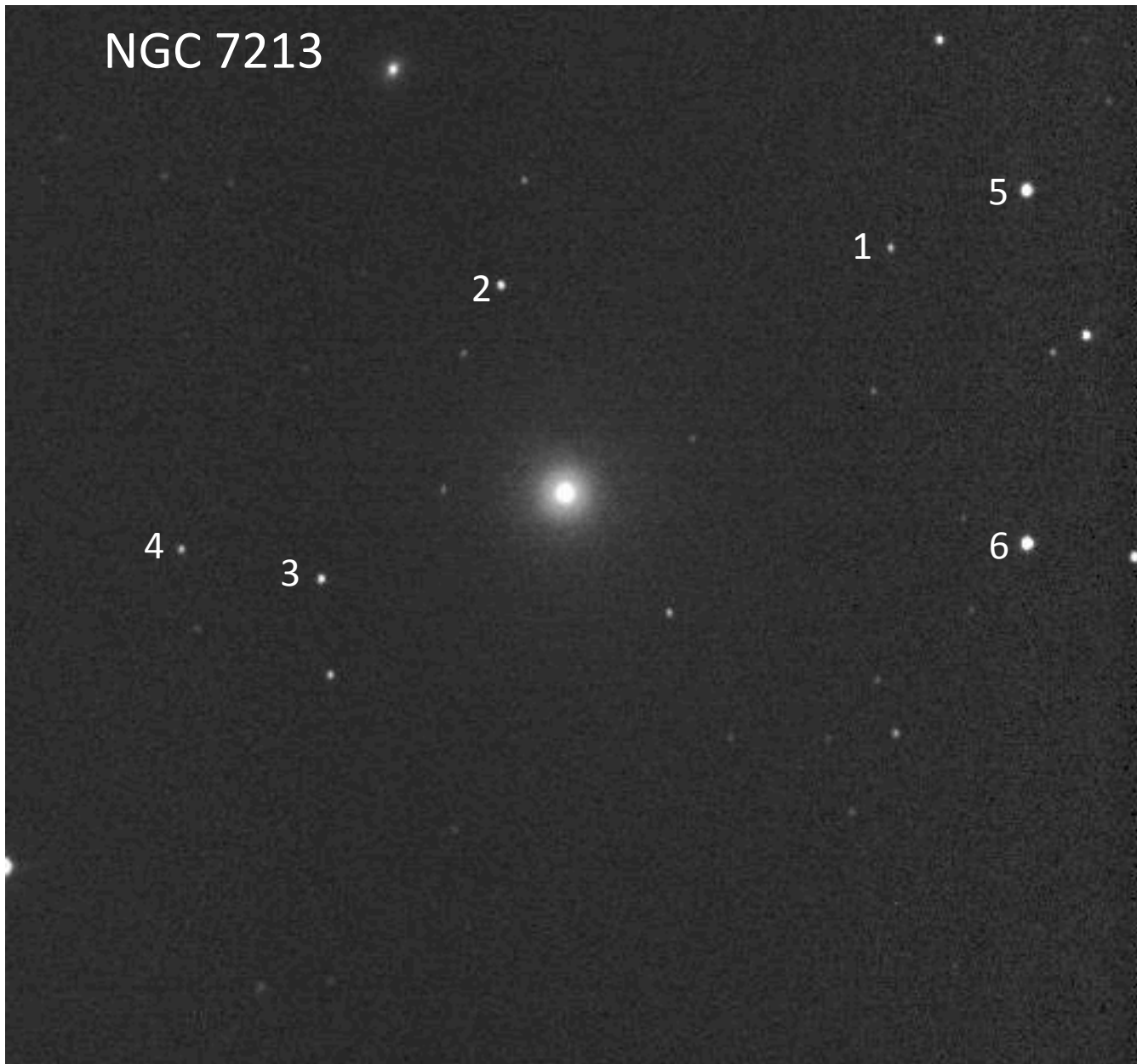


Star	B	V
1	14.00	13.06
2*	13.74	13.02
3	13.78	12.75
4	13.96	12.29
5	15.18	13.90
6	15.30	14.12
7*	13.54	13.22

Foreground reddening is large here; starred stars are less red than usual.

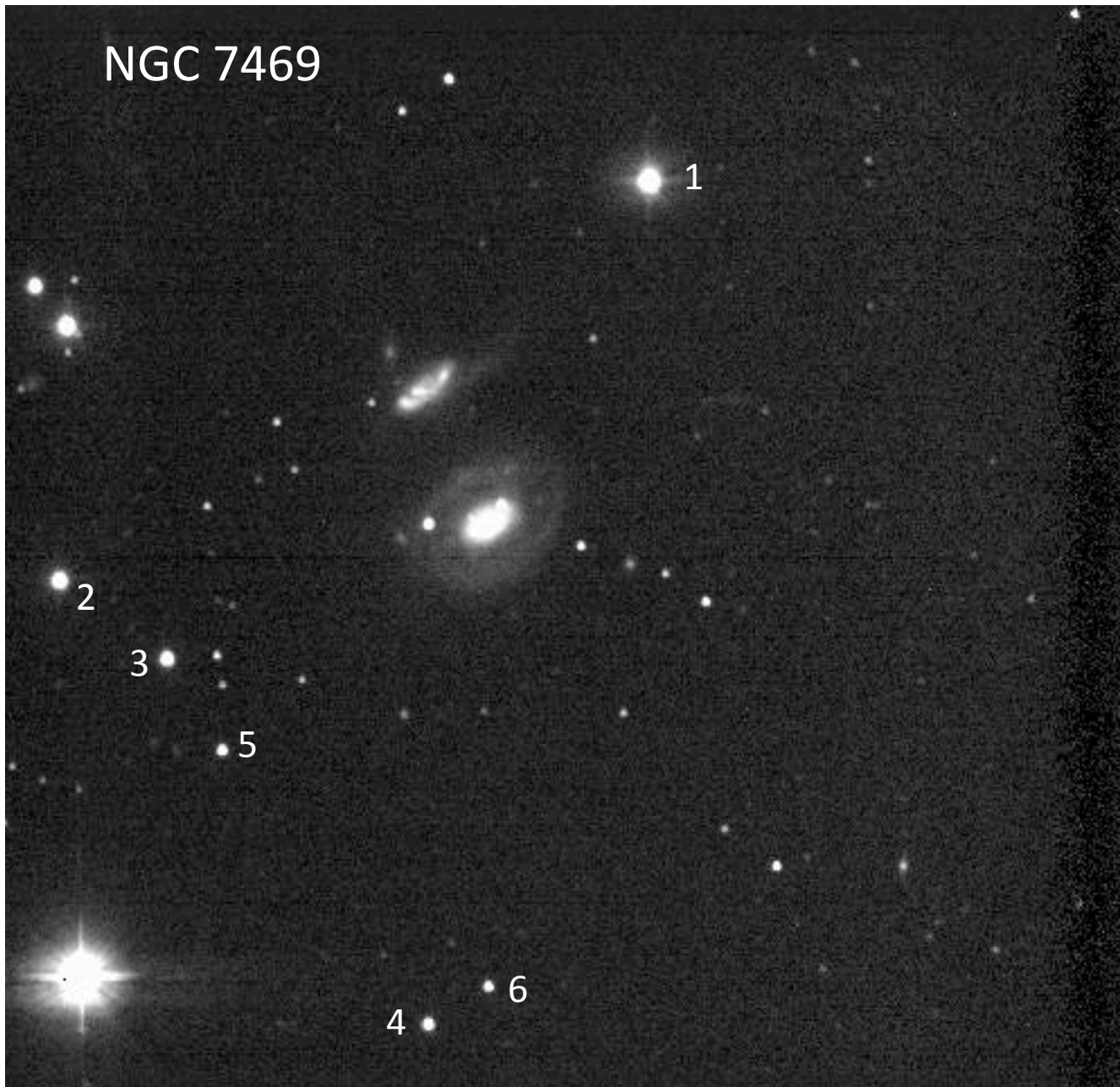
Base image SARA-S V 10x10'

NGC 7213



Star	B	V
1	16.30	15.61
old	16.32	15.68
2	15.48	14.81
old	15.39	14.80
3	15.68	14.87
old	15.70	14.90
4	16.65	15.73
old	16.73	15.71
5	13.29	12.60
6	13.40	12.34

Base image: SARA-S V 10x10'



Star	B	V
1	12.06	sat.
old	12.17	10.93
2	13.27	12.54
old	13.27	12.67
3	14.24	13.45
old	14.22	13.54
4	15.43	14.63
old	15.33	14.63
5	16.29	15.34
6	16.60	15.70

Base image SARA-S V 10x10'